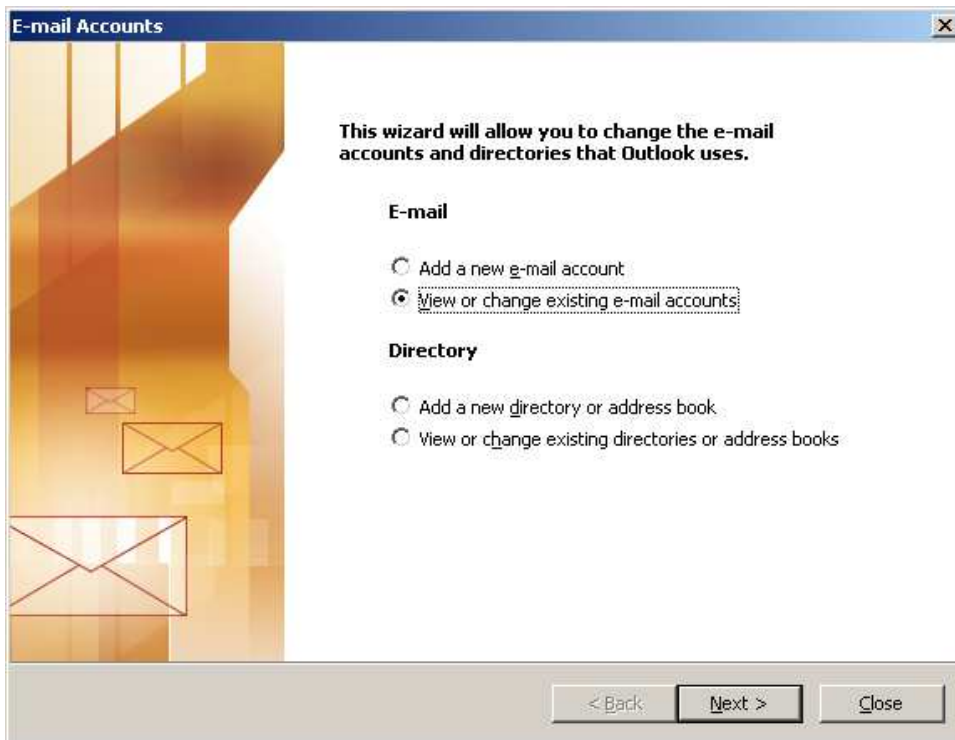


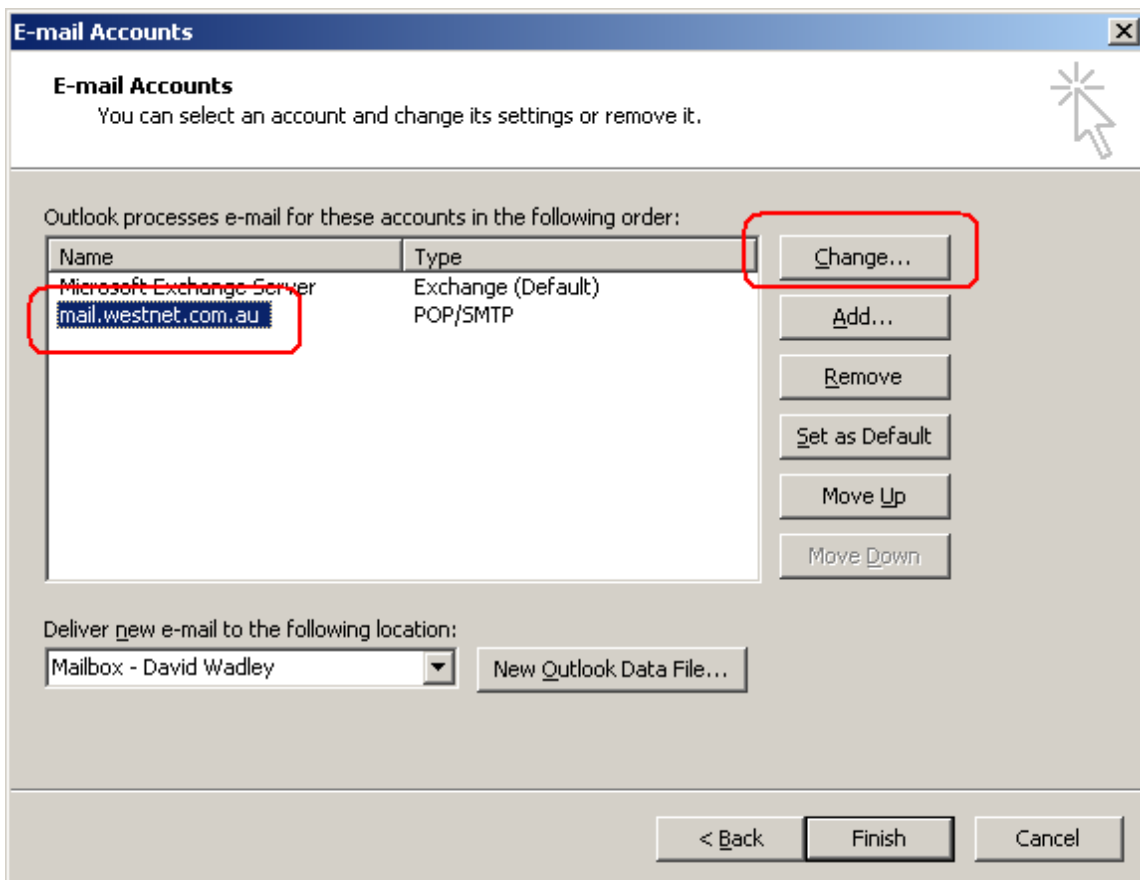
Configuring Outlook 2003

Click on Tools – Email Accounts

Click on View or change then click Next



Select your email account then click on change.



Make sure the outgoing mail server is set to mail.westnet.com.au then click on More Settings

E-mail Accounts

Internet E-mail Settings (POP3)
Each of these settings are required to get your e-mail account working.

User Information
Your Name: David Wadley
E-mail Address: david@myport.com.au

Server Information
Incoming mail server (POP3): mail.westnet.com.au
Outgoing mail server (SMTP): mail.westnet.com.au

Logon Information
User Name: david@myport.com.au
Password: *****
 Remember password

Log on using Secure Password Authentication (SPA)

Test Settings
After filling out the information on this screen, we recommend you test your account by clicking the button below. (Requires network connection)

Test Account Settings ...

More Settings ...

< Back Next > Cancel

Clear the "My outgoing server (SMTP) requires authentication" setting.

Internet E-mail Settings

General **Outgoing Server** Connection Advanced

My outgoing server (SMTP) requires authentication

Use same settings as my incoming mail server

Log on using

User Name: _____
Password: _____

Remember password

Log on using Secure Password Authentication (SPA)

Log on to incoming mail server before sending mail

OK Cancel

Click on OK, Next, Finish.